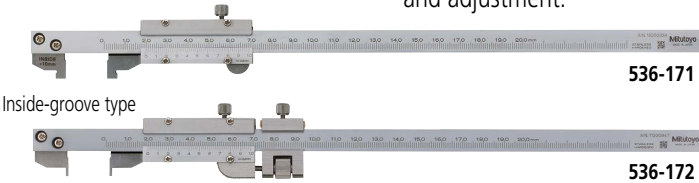


Calipers

Hook Type Vernier Caliper
SERIES 536

- Can measure width of grooves and lands inside bores and recesses.
- 536-172 is equipped with a fine-adjustment wheel to enable precise feed and adjustment.

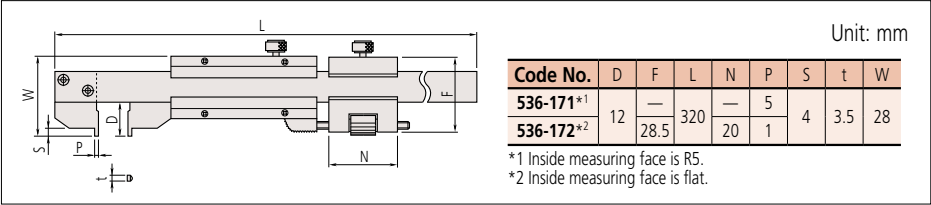


SPECIFICATIONS

Code No.	Range (mm)*1	Graduation (mm)	Maximum permissible error (mm)*2		Remarks
			EMPE	SMPE	
536-171	0 - 200 (10.1 - 200)	0.02	±0.03	±0.03	—
536-172	0 - 200 (2.1 - 200)				with fine adjustment

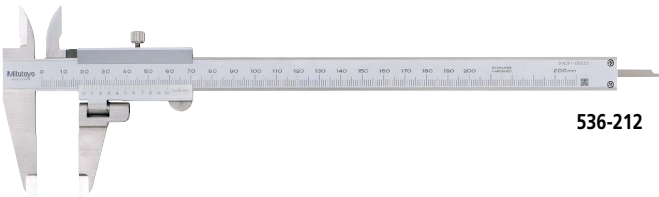
*1 (): Dimension in inside measurement
*2 The Partial Surface Contact Error (EMPE) and Shift Error (SMPE) are terms defined by ISO 13385-1:2019.

DIMENSIONS



Swivel Vernier Caliper
SERIES 536 — Moving Jaw Type

- The moving jaw can be rotated to measure sectioned shafts.
- Can measure outside and inside dimensions, depth, and steps.

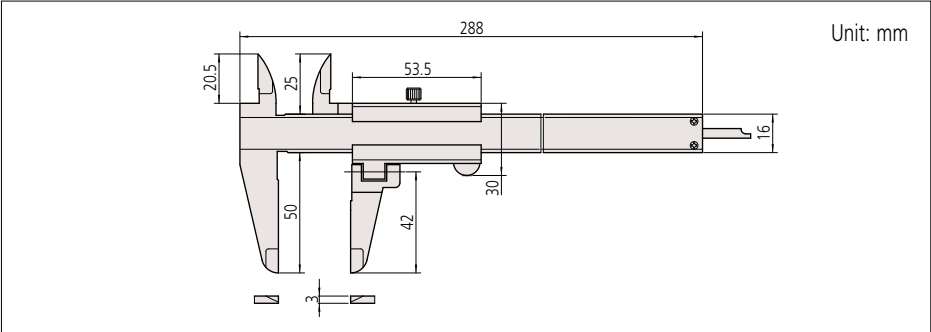


SPECIFICATIONS

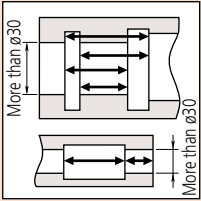
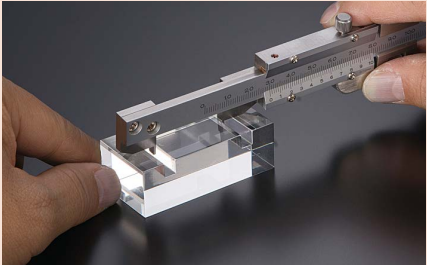
Code No.	Range (mm)	Graduation (mm)	Maximum permissible error (mm)*		Remarks
			EMPE	SMPE	
536-212	0 - 200	0.05	±0.05	±0.07	with depth bar

* The Partial Surface Contact Error (EMPE) and Shift Error (SMPE) are terms defined by ISO 13385-1:2019.

DIMENSIONS



Measurement example



Measurement example

